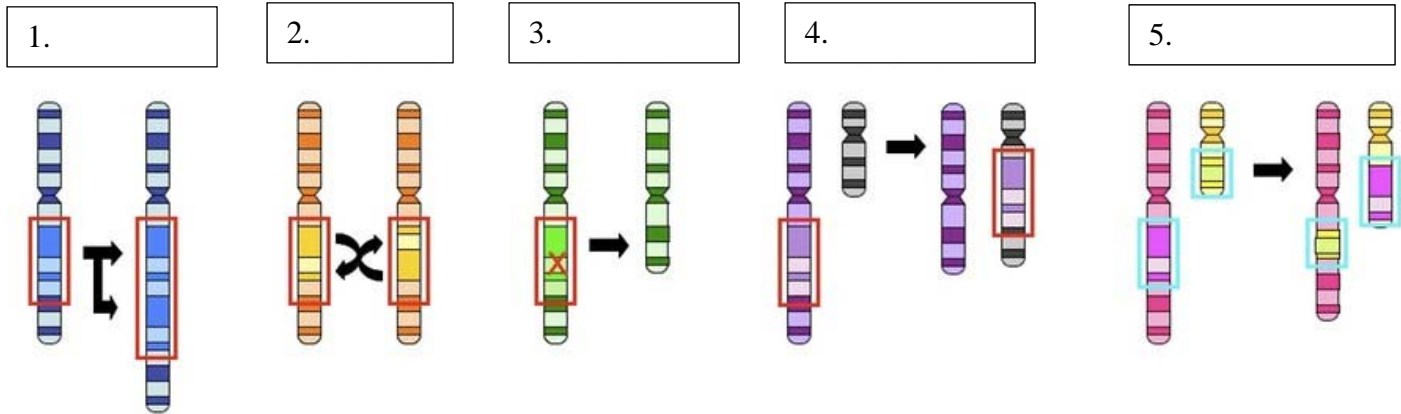


## VLA Basic Biology: Unit 13 Worksheet

**A. Label the Chromosomal Mutations figure below using the following terms:**

*Deletion, Duplication, Insertion, Inversion, Translocation*



**B. Select the chromosomal mutation that best matches the mutation description given.**

- A. Deletion
- B. Duplication
- C. Insertion
- D. Inversion
- E. Translocation

1. \_\_\_\_\_ A section of chromosome is inserted or added to a nonhomologous chromosome.
2. \_\_\_\_\_ A piece or section of chromosome is copied and added to the same chromosome.
3. \_\_\_\_\_ A section of one chromosome switches position with a section from a nonhomologous chromosomes.
4. \_\_\_\_\_ A section of chromosome is reversed and inserted back into the same location on the same chromosome.
5. \_\_\_\_\_ A section of a chromosome is missing or was not copied, resulting in a loss of genetic material.

